

Alaska Department of Fish and Game

Habitat Section
Southeast Region



191-20-13400-2040 Tributary 1

ADDITION

Water body name:

Survey date: 7/18/2024

Quad: Icy Bay D2, D3

Species & Lifestage:

Upper Reach Latitude: 59.987891 **Longitude:** -141.731510

Survey crew: NJ, CD, DK

Lower Reach Latitude: 59.984940 **Longitude:** -141.732382

Findings: We surveyed this uncataloged stream using baited minnow traps and GPS and captured juvenile coho salmon. This is a large, open ponded complex just south of the road that provides excellent rearing habitat. It doesn't appear to cross the road, but a tributary connected to this complex east of here does (Table 1; Figures 1, 2).

Recommendations: Add this uncataloged stream to the anadromous waters catalog for rearing coho salmon (Figure 3).

Nomination: Pending

Table 1.—191-20-13400-2040 tributary 1 survey data.

Waypoint	Latitude	Longitude	Notes	Stream Width ft	Stream Substrate	Habitat Features	Gradient %	Sample Effort	Sample Results
593	59.987894	-141.731533	Huge ponded water complex. Set MT approx 50 ft south of road but water seems to connect throughout whole area. Coho caught from multiple age classes. Will fly drone to see what complex looks like. Great rearing habitat.		Fine Organic		0-1	MT	37 CO



Figure 1.—Juvenile coho salmon caught at waypoint 593.



Figure 2.—Ponded water complex at waypoint 593.

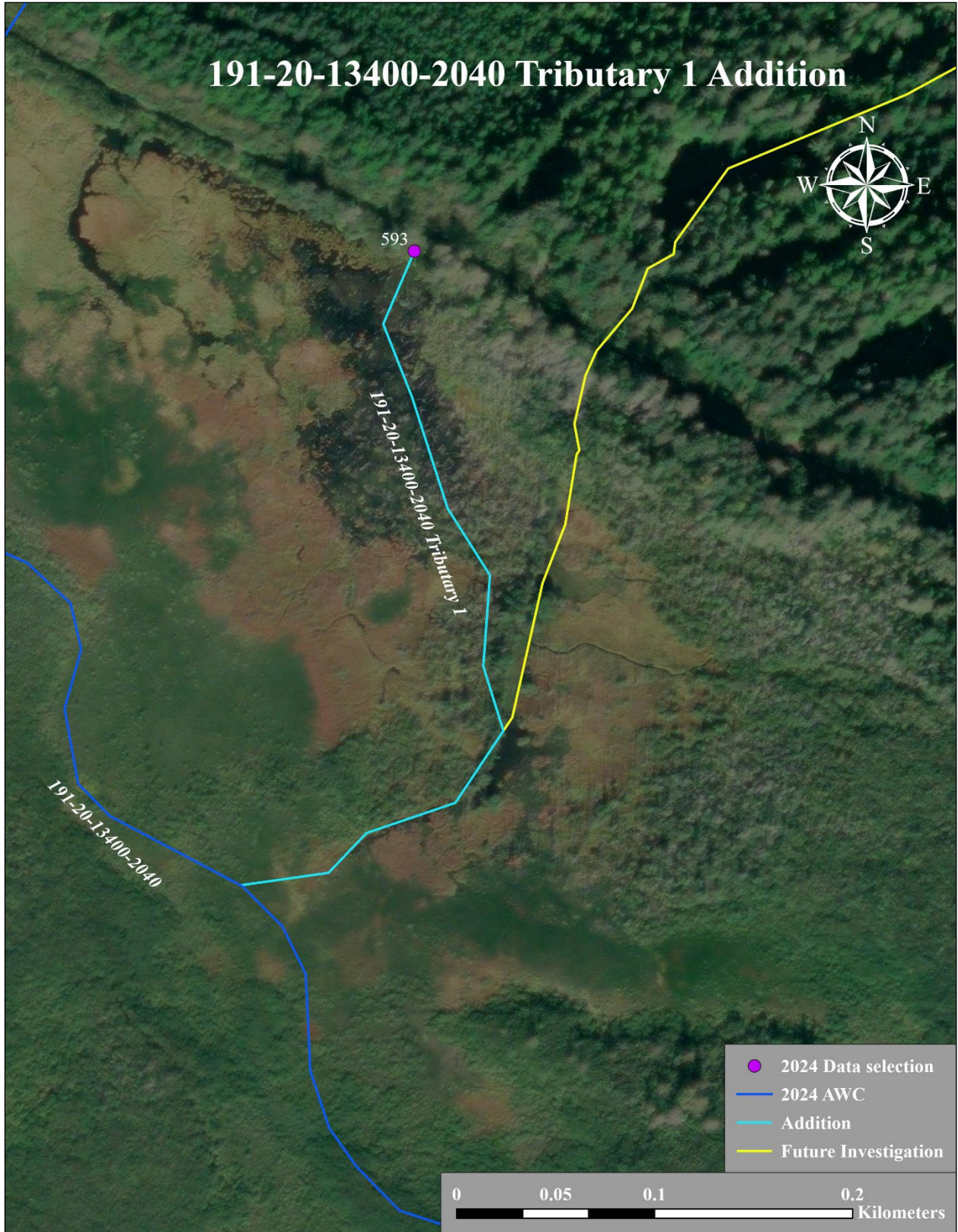


Figure 3.—191-20-13400-2040 tributary 1 addition map.